

FLOORING TRADE DEPOT FLOORING SPECIALISTS



AUTEX 
Interior Acoustics

Flooring Trade Depot

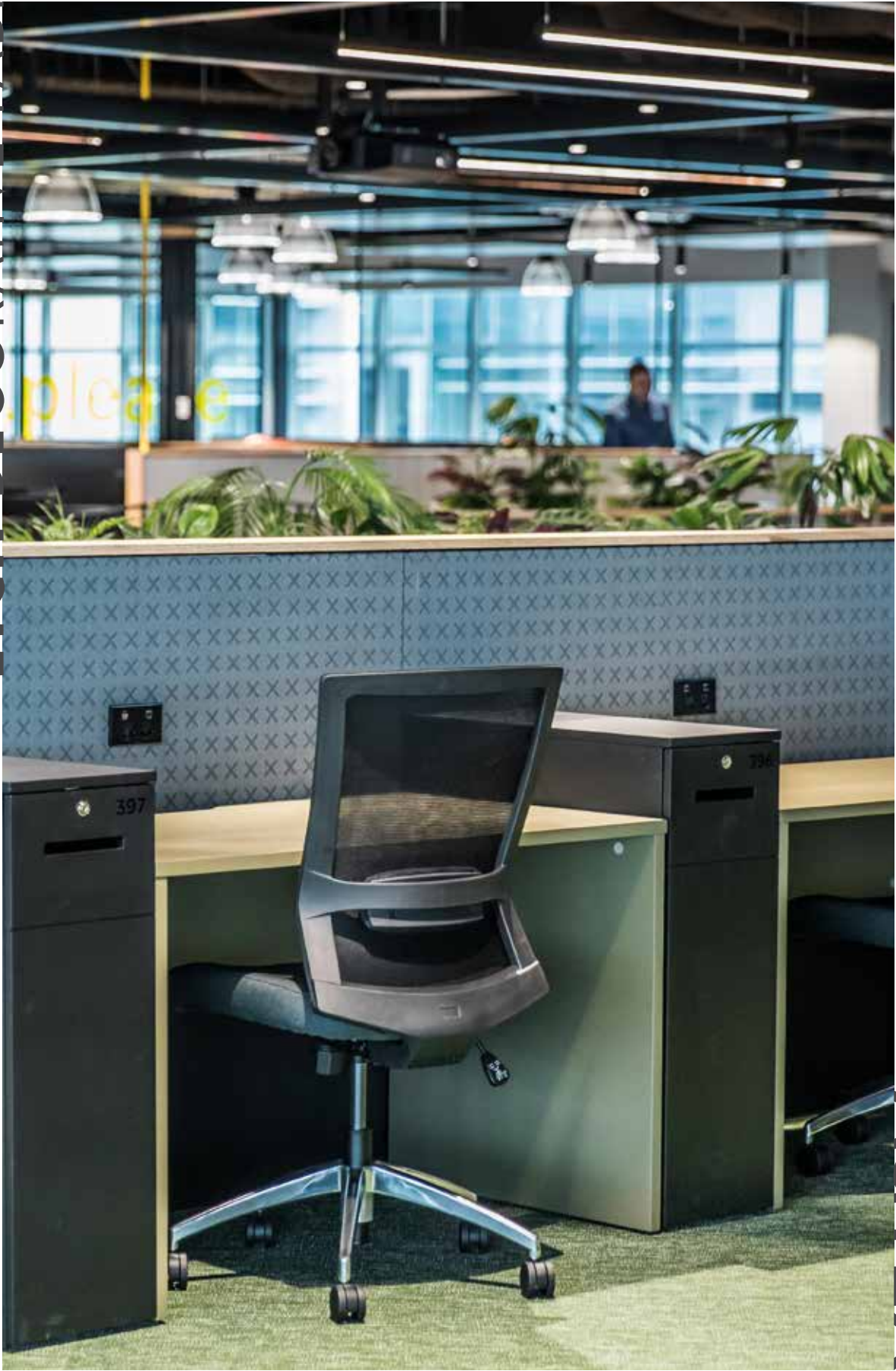
19 Wilson Street

Royal Park SA 5014

Phone 08 8447 2111

www.flooringtradedepot.com.au

ETCH DECORATIVE FABRIC





ETCH™
DESIGN: CUSTOM
COLOUR: STATELY

ETCH™ DECORATIVE FABRIC

Etch™ is a visual layer of expression, a wall fabric combining design, colour and texture. Available in a palette of 30 colours, choose from 15 standard patterns or Etch your own custom design.

Etch is suited for overlaying directly to your chosen surface or choose to incorporate one of Autex's acoustic backing options to provide a range of acoustic absorption.

Etch is a decorative, functional and durable interior finish suitable for commercial offices, theatres, libraries, retail, hospitality and education interiors.

Etch represents Autex and our commitment to innovation;
Etch, create great space.

APPLICATIONS

- Decorative and functional wallcovering for education, commercial offices, theatres, libraries, retail, and hospitality sectors
- Custom cut and pattern design available
- Use in conjunction with other Autex Interior Acoustic products for a complete interior solution
- Backing available in 6mm, 12mm, 25mm and 50mm options

SPECIFICATION

Roll 3mm (nom.) depth, colour (L),

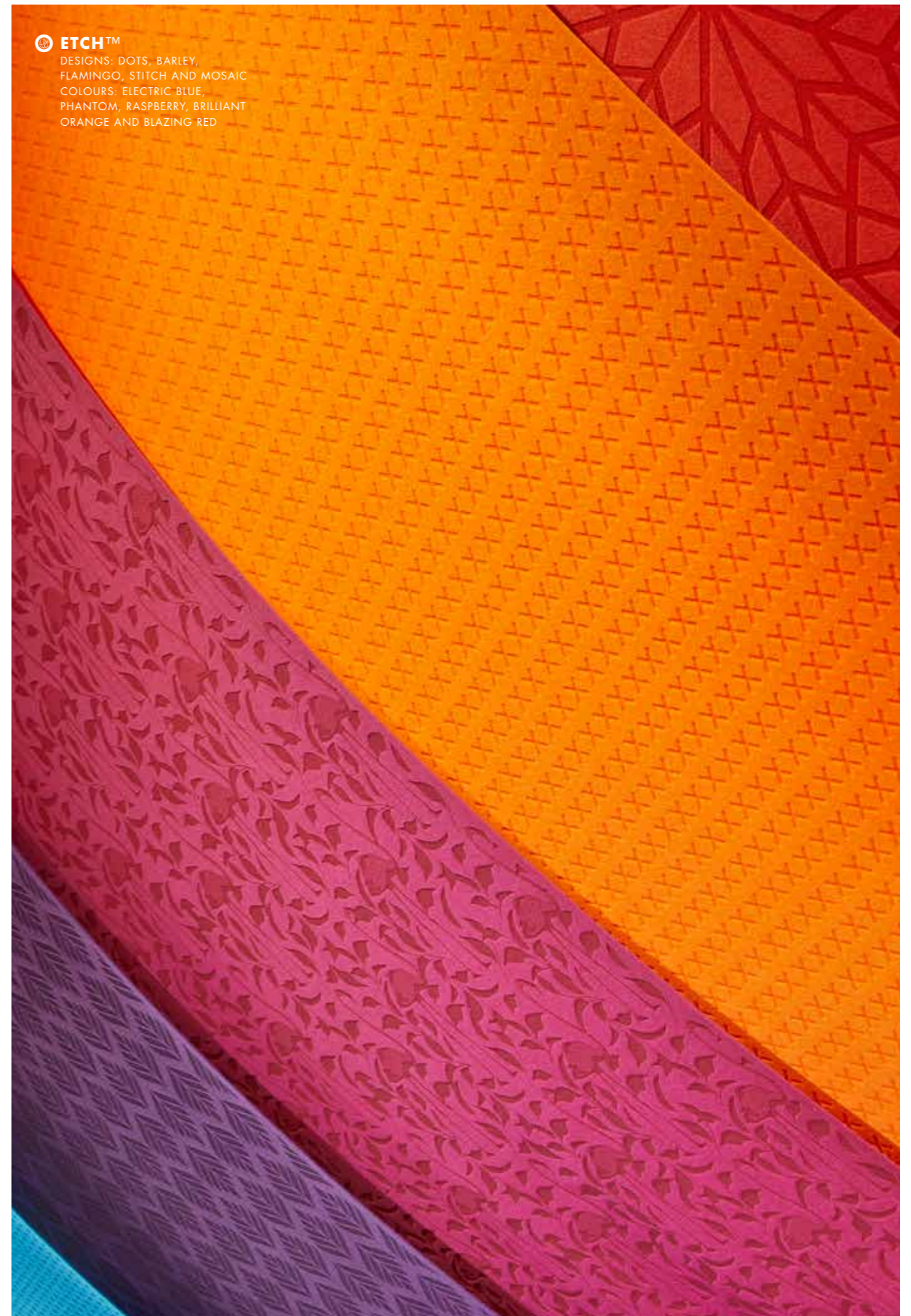
Fire Rating ISO 9705:

Classification: Group 1-S, AS ISO 9705 – 2003

Classification: Group 1, EN13501-1:2007+A1: 2009: B - s1, d2

Install as per Autex recommendations.

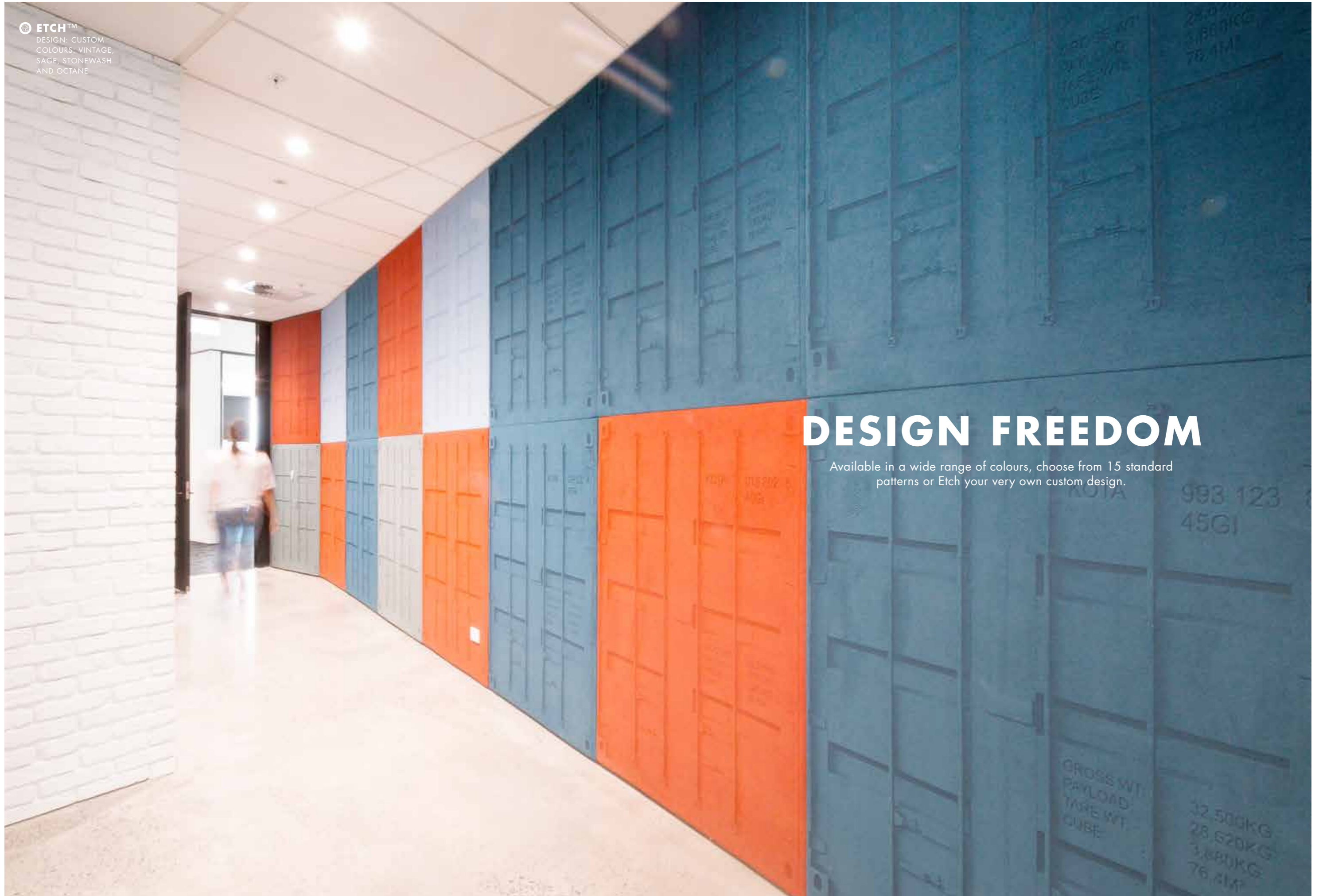
If Etch™ is to be specified for use other than as a wallcovering, please seek guidance from your Autex account manager.



ETCH™
DESIGN: CUSTOM
COLOURS: VINTAGE,
SAGE, STONEWASH
AND OCTANE

DESIGN FREEDOM

Available in a wide range of colours, choose from 15 standard patterns or Etch your very own custom design.





KEY FEATURES AND BENEFITS

- Use alone as a wallcovering or combine with Autex Interior Acoustic products for a high-performance sound absorbing solution
- Design flexibility with over 30 colour choices
- Limitless branding possibilities with in-house custom design
- Lightweight and easy to handle
- Made from 100% polyester fibre without chemical binders and certified low VOC
- Manufactured using a minimum of 80% post-consumer recycled material
- Highly durable providing long-term stability and performance
- Safe, non-toxic, non-irritant and non-allergenic
- Manufactured under ISO 9001 and ISO 14001 certified Quality and Environmental Management Systems
- Does not contain any Red List chemicals*

*Red List chemicals are harmful to living creatures, including humans. Red List chemicals can be harmful to construction and factory workers, pollute the environment and bio-accumulate up the food chain until they reach toxic concentrations. A copy of the Red List chemicals can be downloaded from www.livingfuture.org

PRODUCT SPECIFICATIONS

Product Name	Etch™
Composition	100% Polyester Fibre (PET)
Drop Width	1.3m x 2.5m
Tolerance	(+5mm)
Other widths are available on request, minimum order quantity applies.	
Thickness	3-4mm
Weight	380gsm

LIGHT REFLECTANCE VALUES

Sanz	36	Blush	10
Lime	29	Sage	9
Azure	24	Emerald	8
Jade	22	Sapphire	8
Porcelain	22	Blazing Red	8
Fawn	20	Raspberry	8
Granny Smith	20	Cinder	5
Stonewash	19	Octane	5
Simba	18	Phantom	4
Brilliant Orange	15	Theatre	3
Spearmint	13	Stately	3
Calypso	13	Charcoal	3
Electric Blue	12	Lightsout	3
Koala	12	Ink	3
Avocado	11	Noir	1

MEASURED IN ACCORDANCE WITH BS 8493:2008+A1:2010

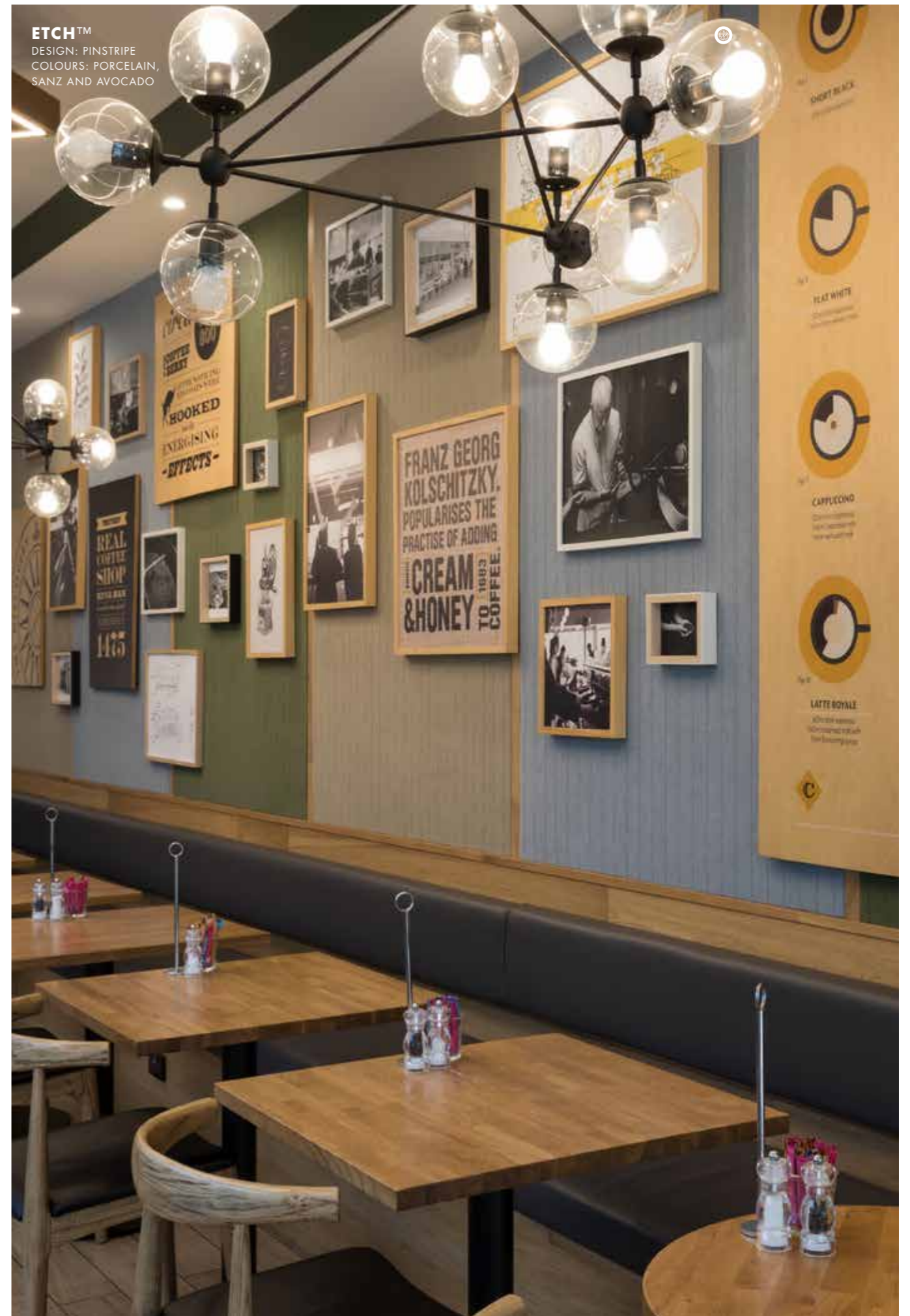
INSTALLATION

Install as per Autex recommendations. Install instructions are included in each pack or available on the website. If Etch is to be specified for use other than as a wallcovering, please seek guidance from your Autex account manager.

ACOUSTIC PERFORMANCE

Etch can be paired with other Autex Interior Acoustic products to create your desired acoustic performance. Please speak to your Autex account manager for guidance and options.

ETCH™
DESIGN: PINSTRIPE
COLOURS: PORCELAIN,
SANZ AND AVOCADO



ETCH™
DESIGN: BURST
COLOUR: ELECTRIC BLUE





FIRE RATINGS

Etch™ is a value-added product made from Autex Vertiface® as the base material. Vertiface® has been evaluated using the following test methods:

ISO 9705: 1993

Classification: Group 1-S
Smoke Production Rate: <math>< 5.0\text{m}^2/\text{s}</math>
As required by NZBC C/VM2

AS ISO 9705 - 2003

Classification: Group 1
(SMOGRARC): <math>< 100\text{m}^2/\text{s}^2</math>
Assessed using methodology AS ISO 9705:2003 in accordance with AS 5637.1:2015, as required by BCA Specification C1.10-4

Fl 4906 dated 11th July, 2012 and FAR 4055-2 dated 8th October, 2013

EN13501-1:2007+A1:2009

B - s1, d2

WF 336910 dated 25th February, 2014

ASTM E84 - 01

Class A, FS:20 - SD:50

01.04913.01.206a dated 29 May 2002

VOC EMISSIONS

Autex polyester has been tested for chemical emissions in accordance with ASTM D5116 and is considered as a low VOC product. VOC concentration: 0.009 mg/m³ (7 days)

WATER VAPOUR SORPTION

ASTM C1104 / C1104M-13a

Test conditions: 49°C, 95%RH

Water vapour absorbed and adsorped after 4 days: 0.4% by weight.

MICROBIAL RESISTANCE

ASTM G21-15

Growth Rating: 0 (No growth)

Etch does not promote the growth of moulds and mildew.

COLOUR FASTNESS TO LIGHT

Etch is suitable for indoor use only. Light fastness is dependent on use and exposure. Etch has been evaluated to the following standard:

ISO 105-B02:2014

Rating: 6 (Highest = 7)

COLOUR FASTNESS TO RUBBING

ISO 105-X12:2016

Dry Rating: 4-5 (Highest = 5)

Wet Rating: 4-5 (Highest = 5)

PATTERN REPEAT

Pattern repeat will vary depending on design. Please refer to the Etch Pattern Repeat Guide for more information.

FABRIC CARE

Blot spills from fabric quickly. Wipe with a damp cloth. Avoid rubbing and excessive amounts of water as this will affect the finish. Use carpet or upholstery shampoo as directed. Blot with a clean dry cloth after each application of solution.

Custom printed Vertiface® requires the services of a specialist cleaning company. Refer to the Etch Cleaning and Maintenance Guide for more information.

ENVIRONMENTAL

Autex is committed to best practice through our ISO 9001 and ISO 14001 certified Quality and Environmental Management Systems.

Autex Etch contains a minimum of 80% previously recycled polyester fibre (from PET bottle-flake). Off-cuts and manufacturing waste are re-used or recycled wherever possible.

Autex Etch is manufactured from 100% polyester fibres and does not contain formaldehyde binders. Autex polyester fibres support safer indoor air quality and will not become a potential airborne pollutant.

SERVICE

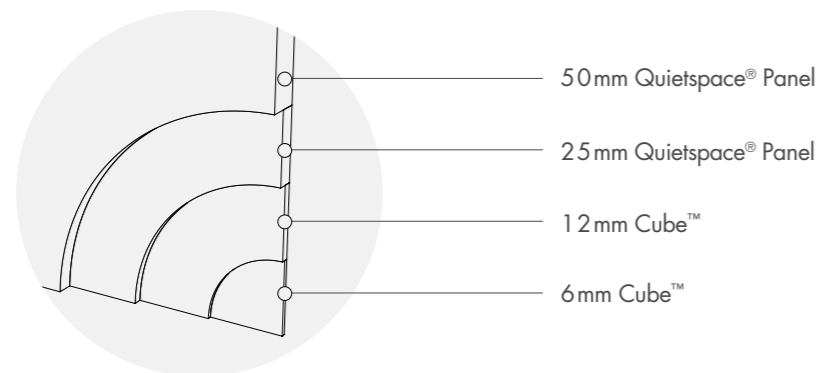
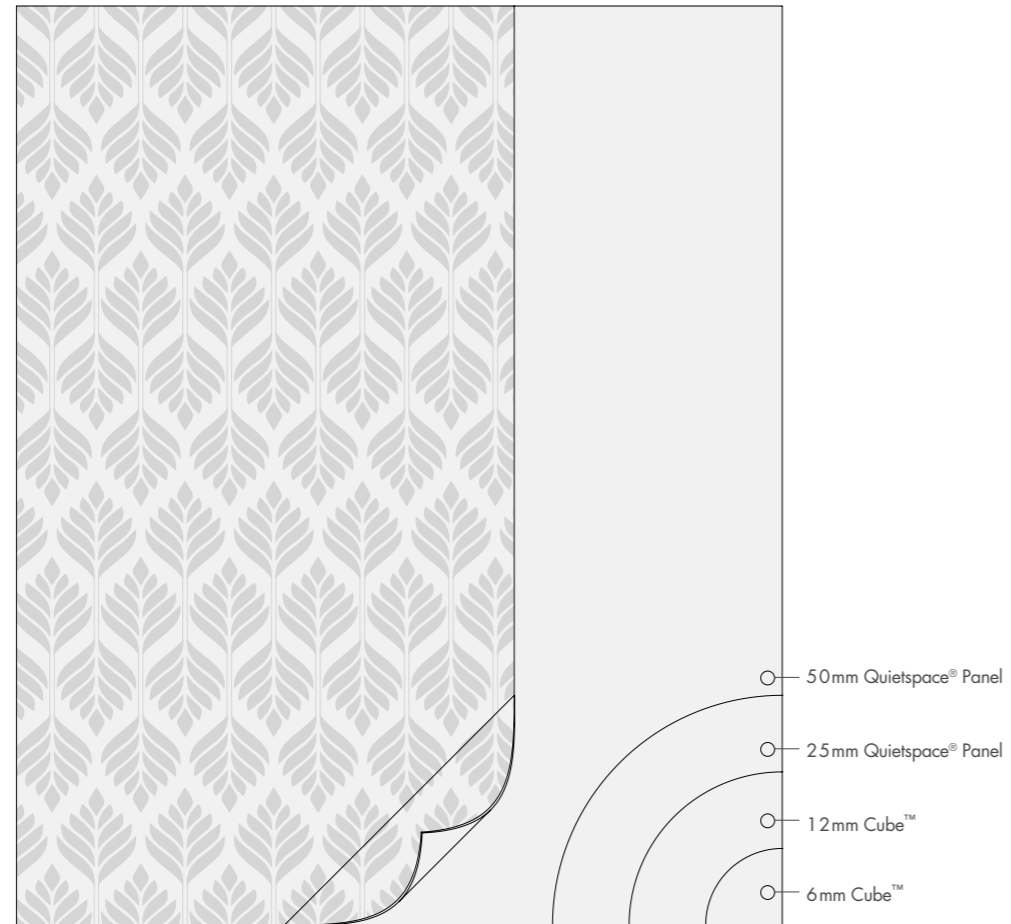
For further information about Etch, Autex Vertiface® or any other Autex product, please contact your Autex account manager or visit our website.

ETCH™
DESIGN: MOSAIC
COLOUR: OCTANE



Please note Mosaic pattern is not to exact scale and is a rendered image.

PICK YOUR **BACKING**





PICK YOUR **BACKING**

ABSORPTION COEFFICIENT ACCORDING TO ISO 354

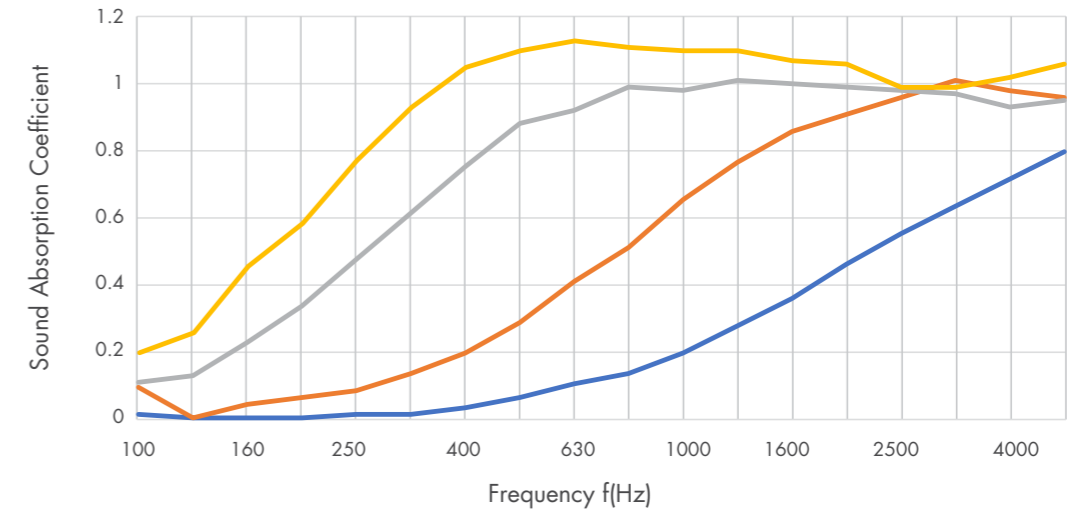
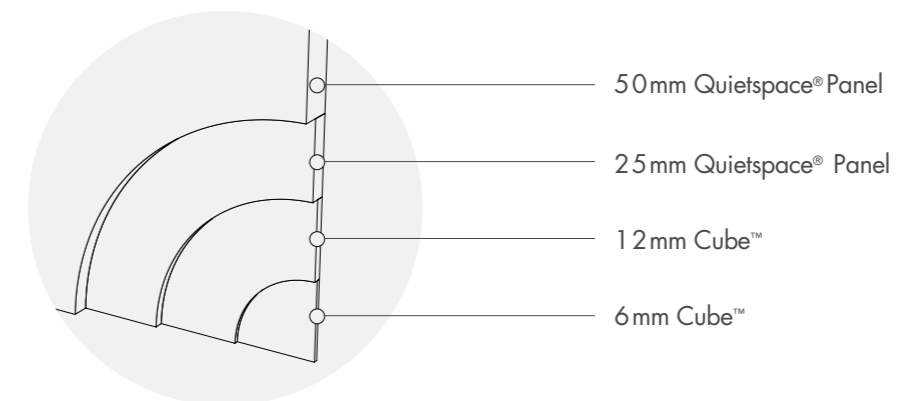


Table presents the practical sound absorption coefficients as according to ISO 11654. Graph presents third octave sound absorption coefficients (According to ISO 354 Measurement of sound absorption in a reverberation room.) The NRC rating is determined as the arithmetic average of the absorption coefficients measured by one-third octave bands centred on 250 Hz, 500 Hz, 1000 Hz and 2000 Hz, and rounded to the nearest 0.05.

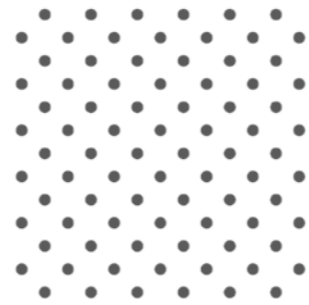
Frequency (Hz)	University of Auckland Test Report Number	125	250	500	1000	2000	4000	NRC
Cube™ 6mm	T0712-1	0.00	0.00	0.05	0.20	0.45	0.70	0.20
Cube™ 12mm	T0712-3	0.05	0.10	0.30	0.65	0.90	0.95	0.45
Quietspace® Panel 25mm	T0712-18	0.15	0.45	0.85	1.00	1.00	0.95	0.85
Quietspace® Panel 50mm	T1228-8	0.30	0.75	1.10	1.10	1.05	1.00	1.00



PICK YOUR
PATTERN



STITCH



DOTS



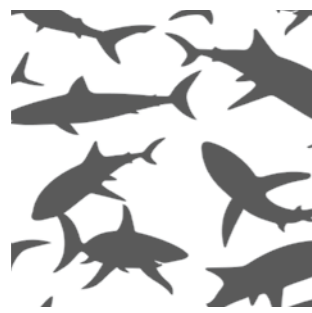
PINSTRIPES



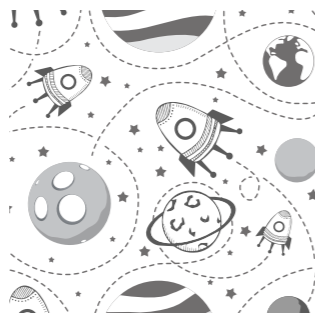
HARLEQUIN



ZOO



JAWS

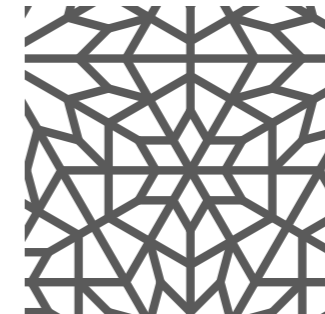


COSMIC



SCHOOL DAYS

PICK YOUR
PATTERN



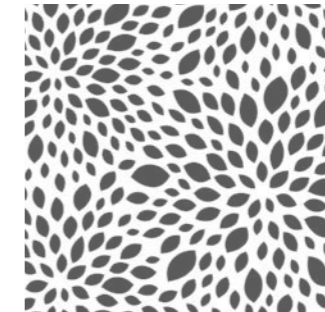
MOSAIC



TROPICS



BAROQUE



BURST



ALPHABET SOUP



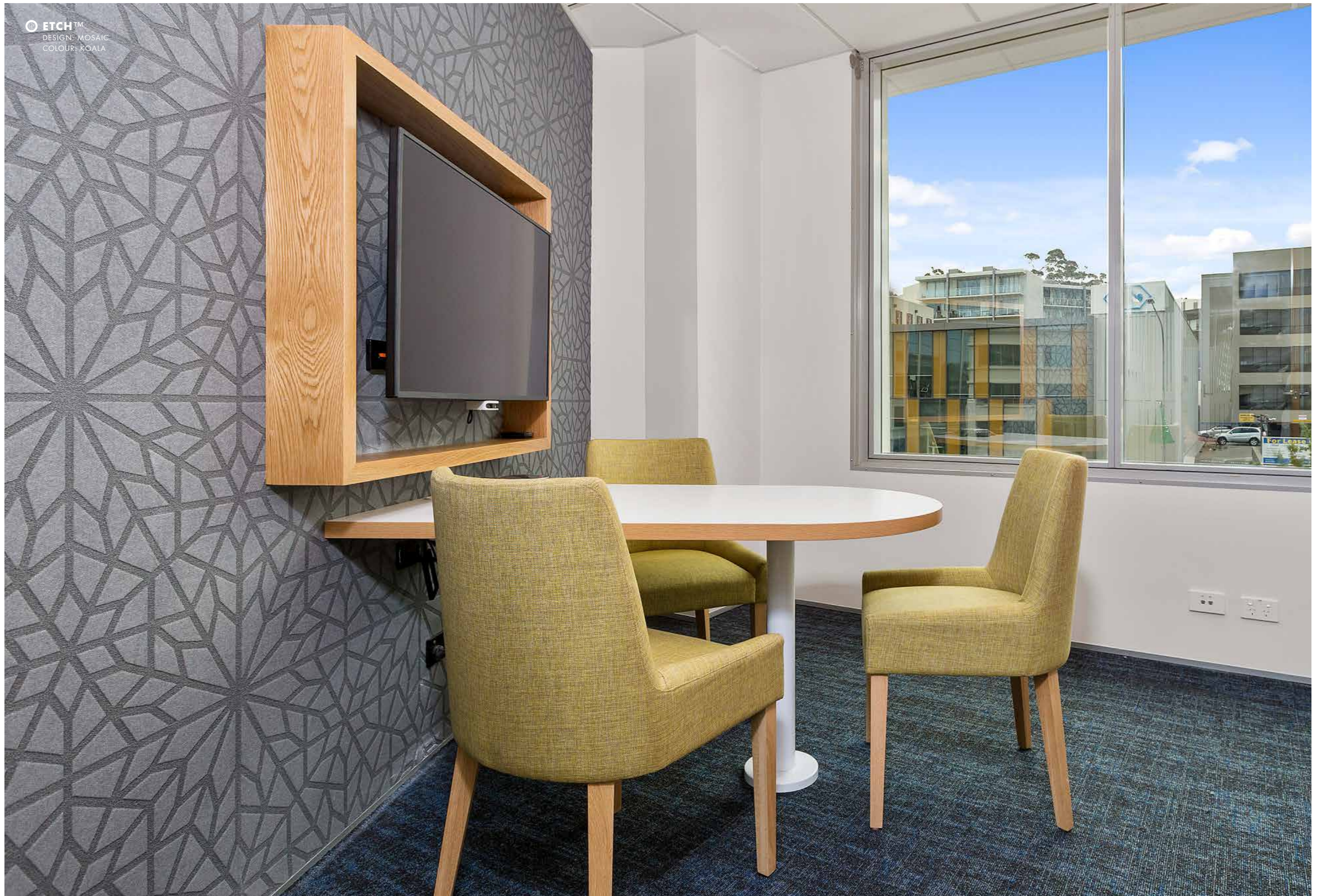
FLAMINGO



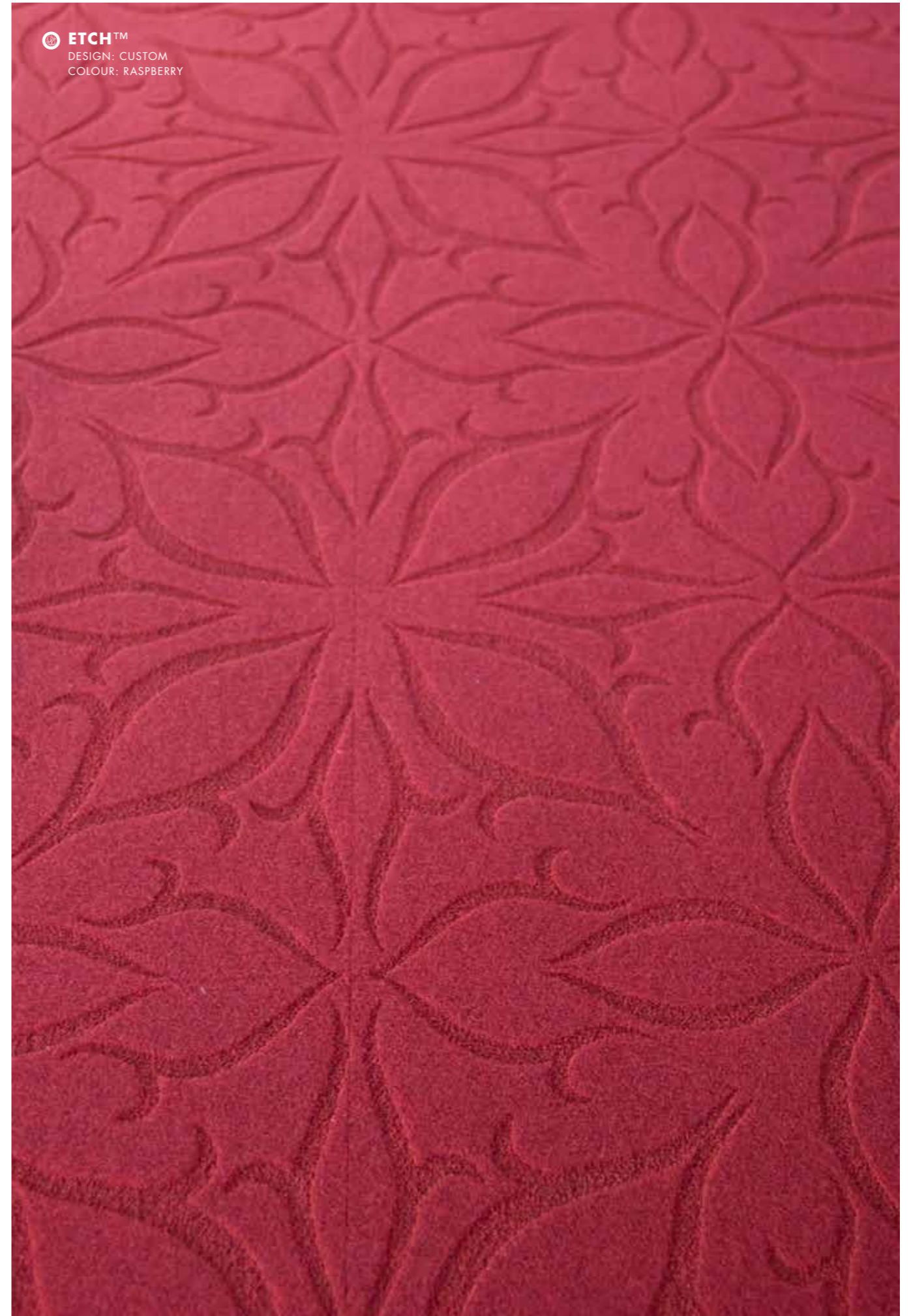
BARLEY

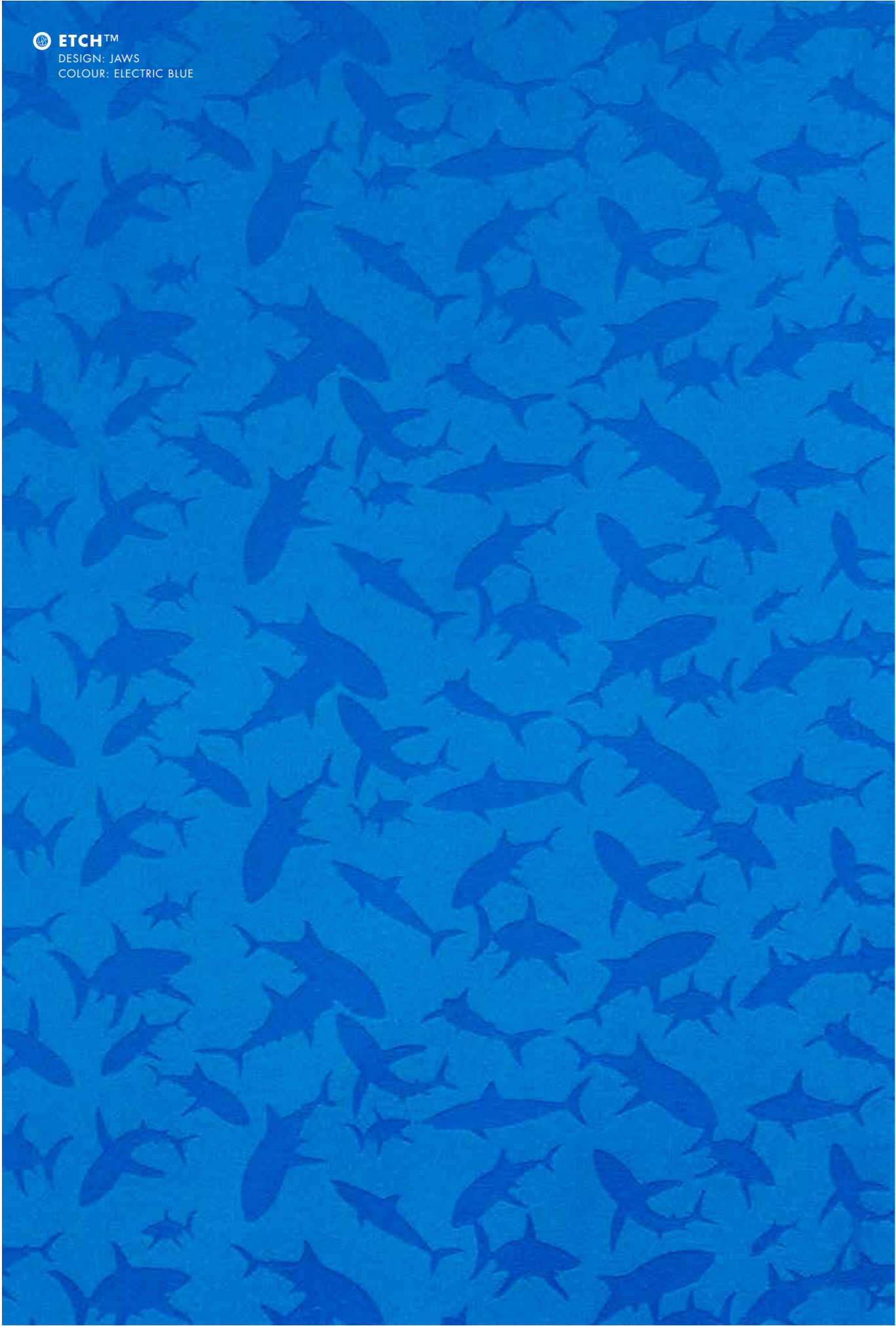
AUTEX

ETCH™
DESIGN: MOSAIC
COLOUR: KOALA



PICK YOUR **COLOUR**





PICK YOUR **COLOUR**

WASABI	LIME	JADE
AVOCADO	SPEARMINT	GRANNY SMITH
EMERALD	OCTANE	AZURE
SAPPHIRE	CALYPSO	ATLANTIS
STATELY	INK	ELECTRIC BLUE



CARING FOR THE ENVIRONMENT

Autex products are manufactured using 100% polyester fibre and aim to contain a minimum of 80% previously recycled fibre (from PET plastics). They are designed to be recycled at the end of their life too. We use Life Cycle Analysis (LCA) to understand the environmental impacts of our products and set targets to reduce these. All our products have been verified as low VOC and are free from harmful chemical binders making them great for indoor environmental quality (IEQ).

We have continual improvement programmes in which we implement a range of initiatives to mitigate the environmental 'hotspots' that we have identified. Our products are GreenRate Level A and LCARate Gold certified.

Etch™ is also Declaresm certified to be Red List free and can be used in Living Building Challenge projects. Autex has a high functioning Environmental Management System (ISO 14001) to enhance its environmental performance and contribute to sustainable development.



Declare.

